

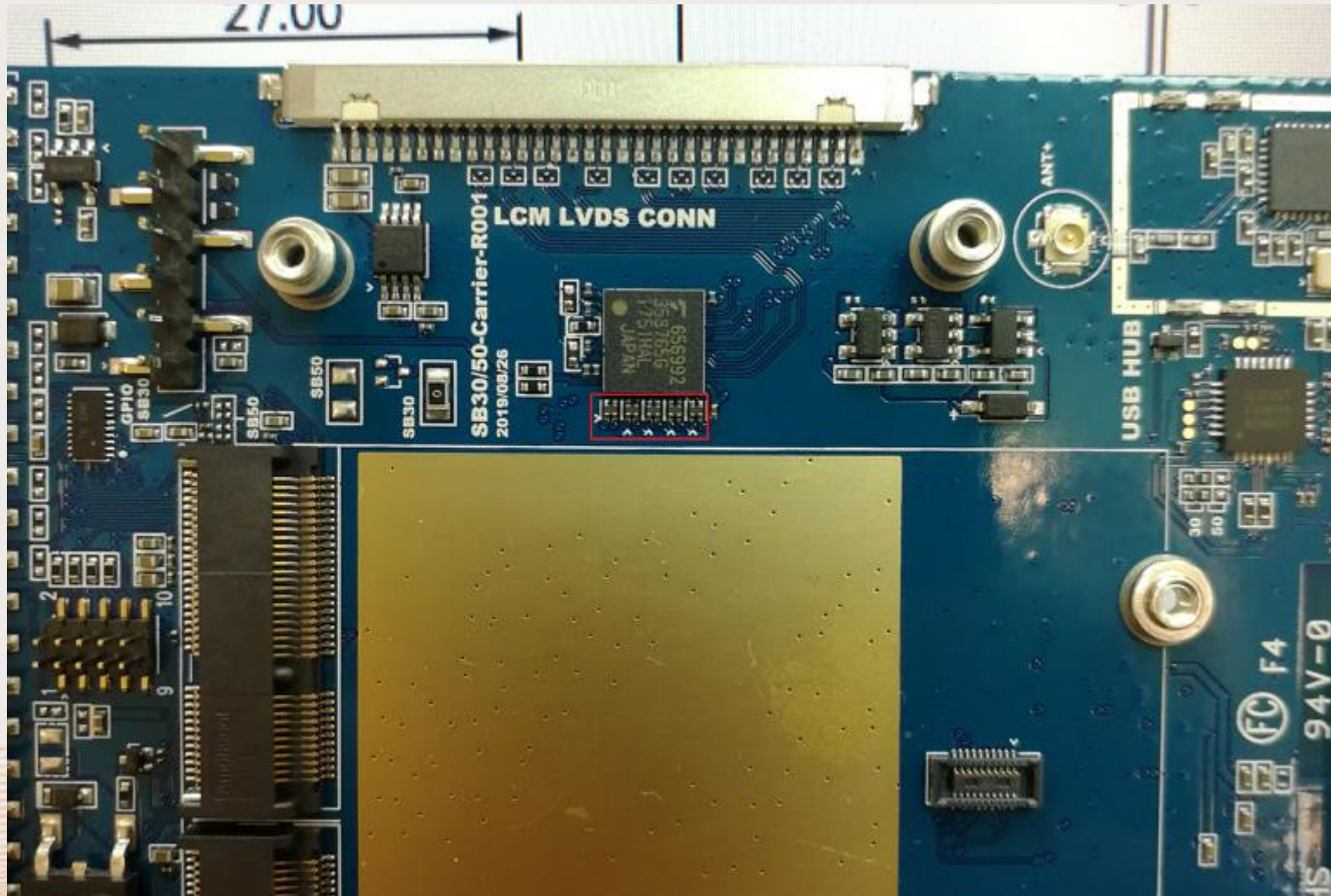
Raspberry Pi Display Rework

Prepared by Lion Wang

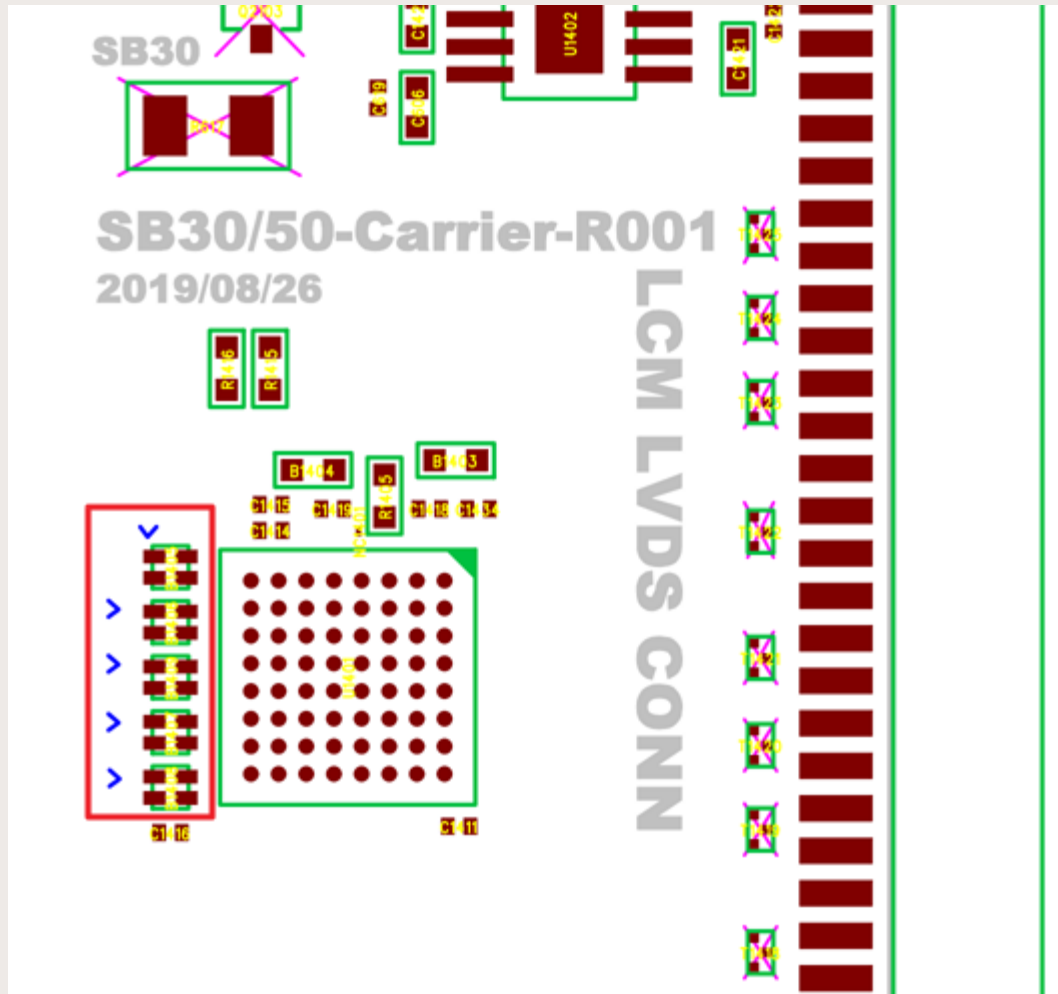


- Before use Raspberry pi display you need follow the steps in below to do some modify with carrier board.

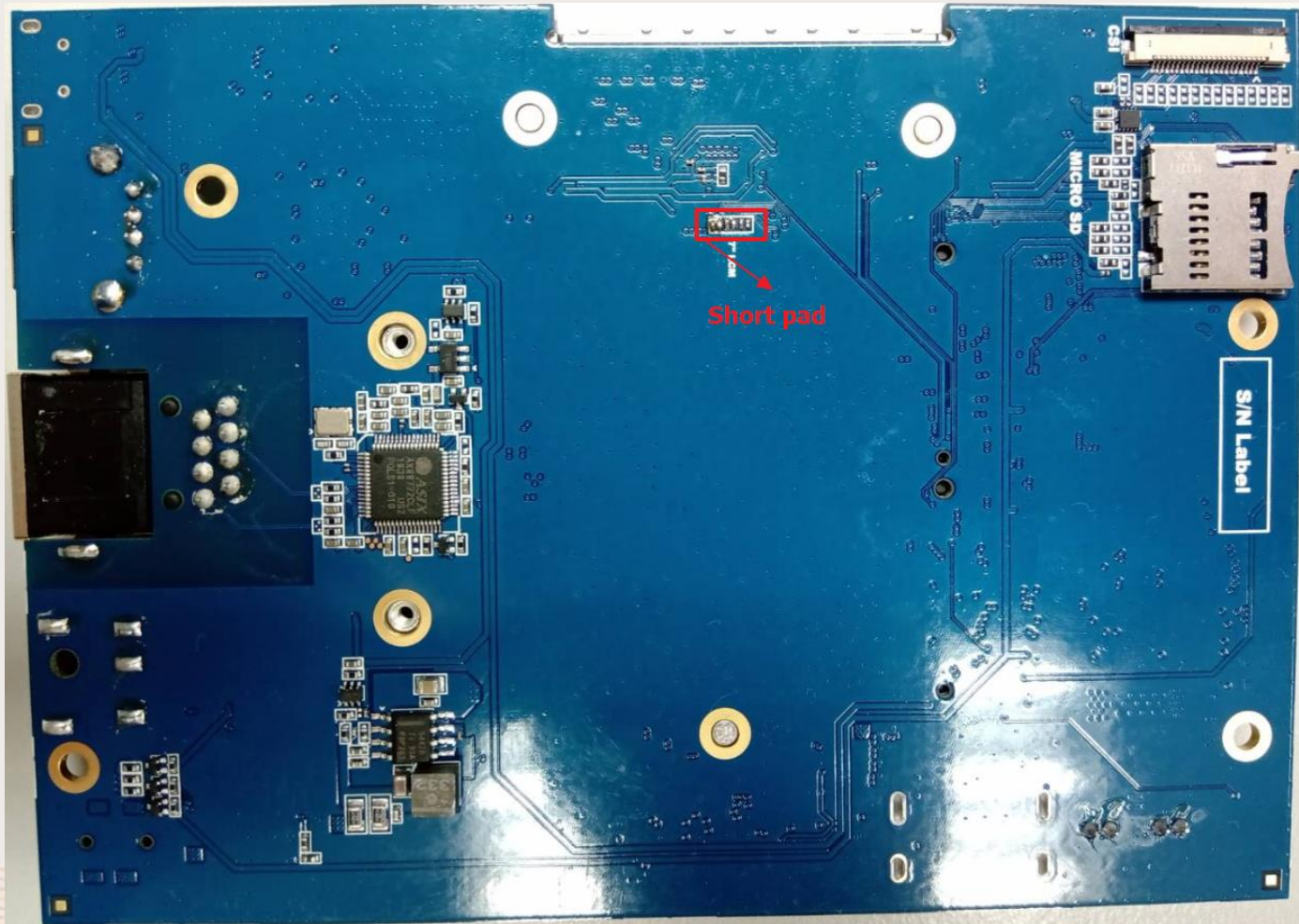
Remove resistance (Not mount)



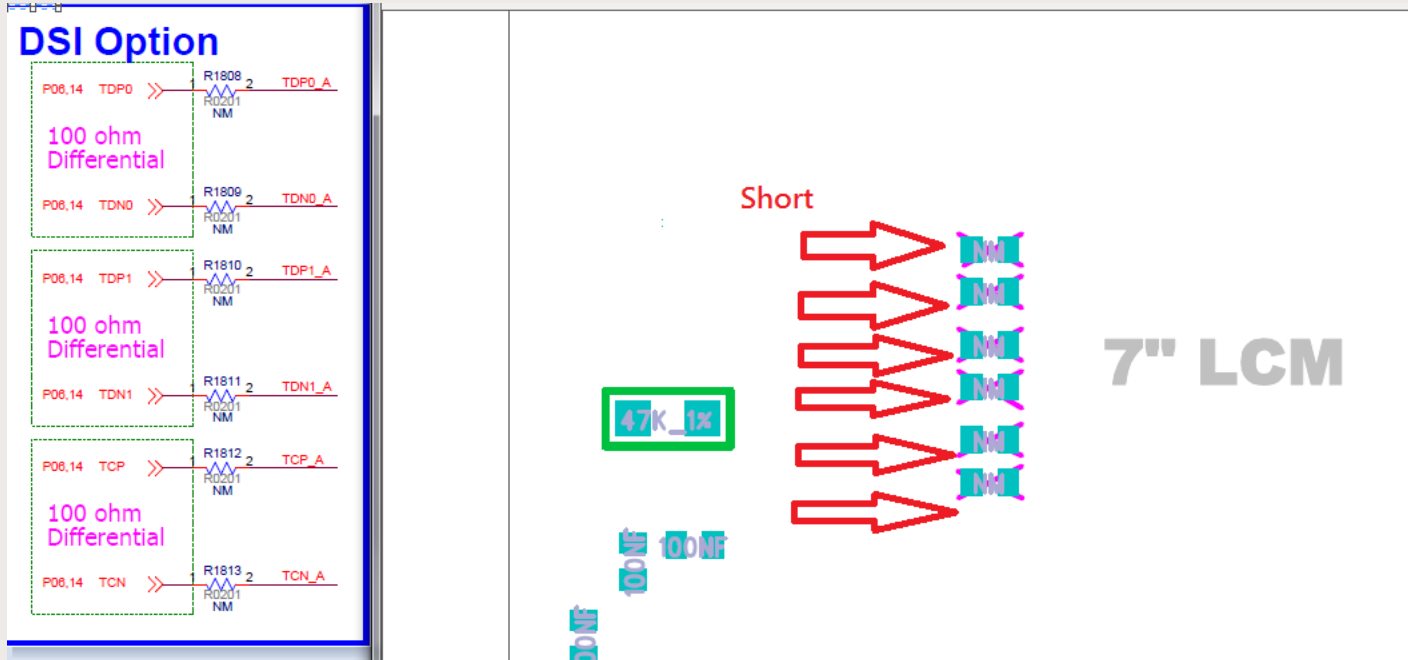
Remove resistance (Not mount)



Short pad

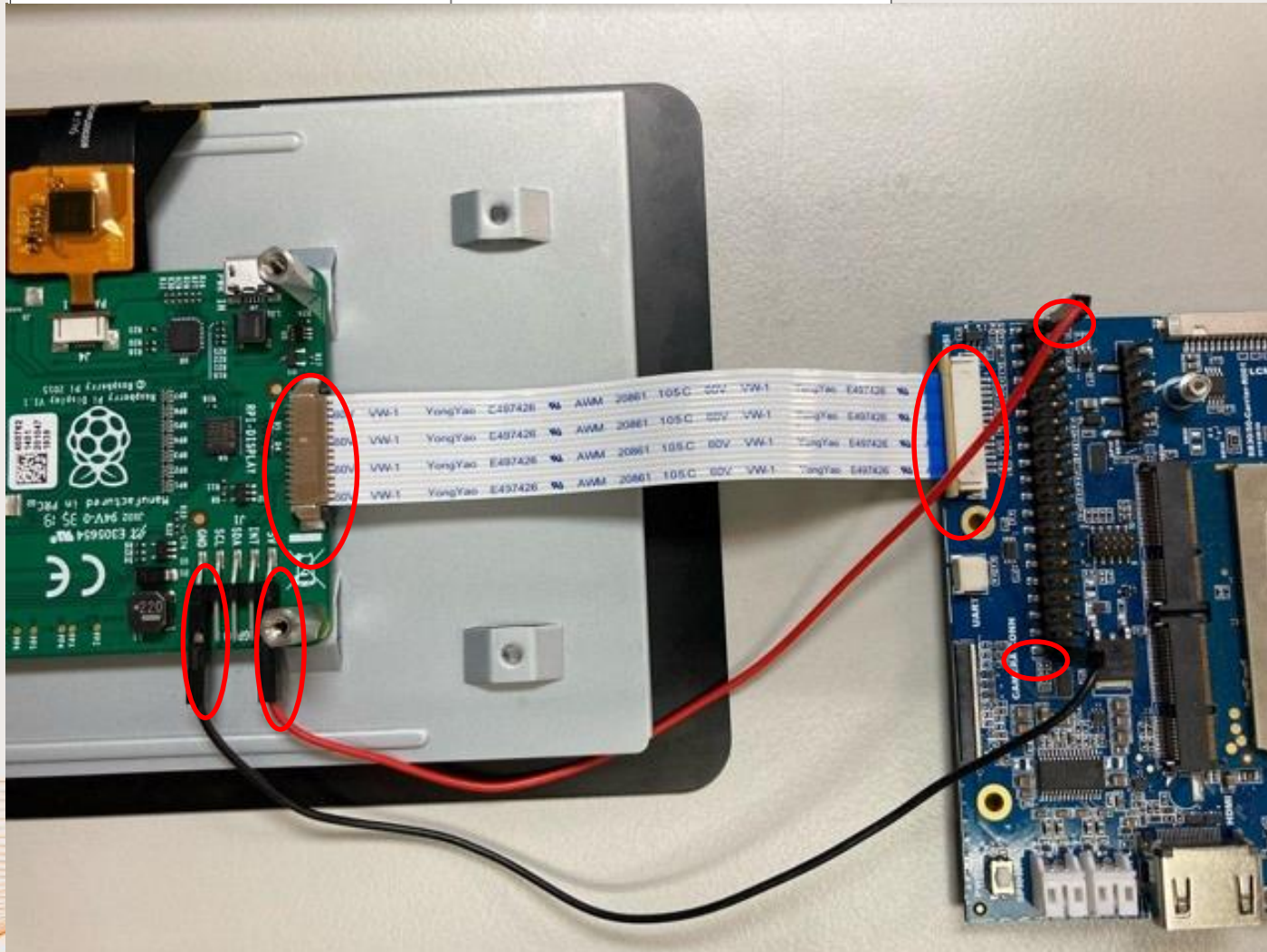


Short pad



How to connect with RaspPi display

Ground	Pin 39 - Ground
DC Power 5V	Pin 2 - DC Power 5V



How to connect with RaspPi display



comm

InnoComm Mobile Technology Corp.